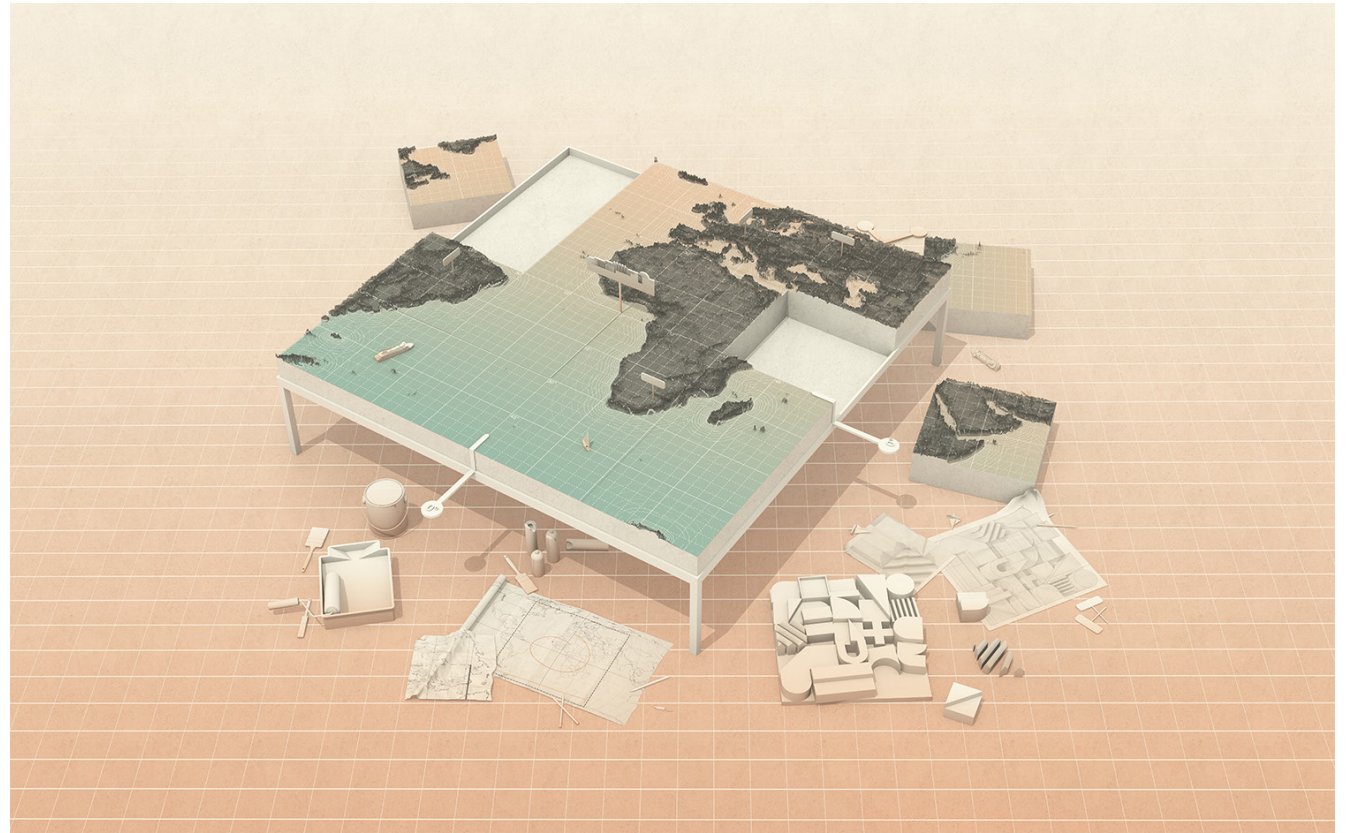


Middle Earth: Dioramas for the planet

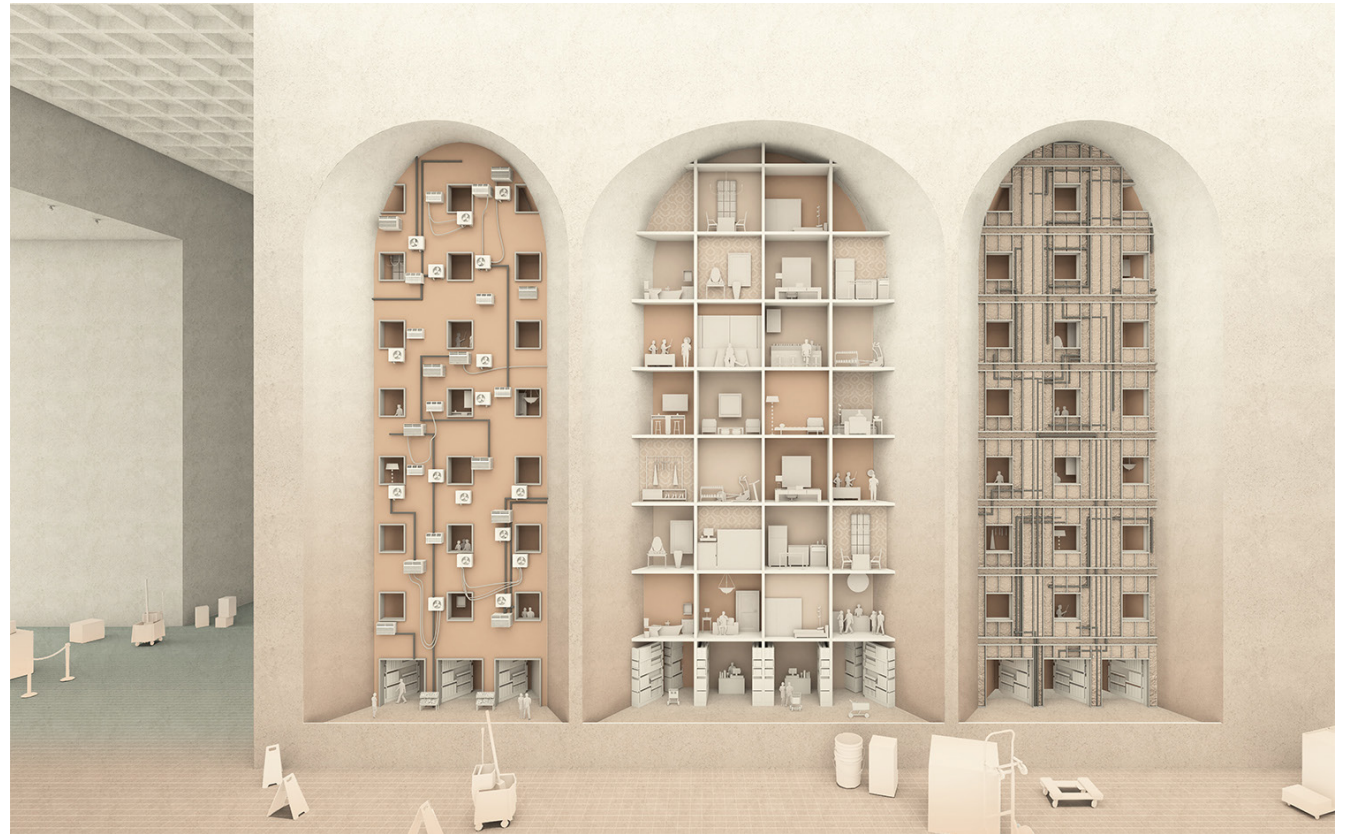
Neyran Turan

Middle of the Earth: Dioramas for the Planet is a geo-architectural fiction, which positions climate change as a cultural and political idea that requires a renewed architectural imagination. The project imagines a natural history museum, which contains large scale dioramas that each displays a specific problem brought by climate change taking place at the "middle of the earth," i.e., around the equator, the earth's zero-degree latitude: the melting of the icebergs, deforestation in Brazil and Indonesia, plastic waste in the Pacific Ocean, sand mining in Singapore, and the e-waste dump sites in Ghana. Rather than limiting the role of climate change for design to a problem to solve, the project speculates on architecture as a measure against which the world might be read.

ENTRANCE HALL. The relief map table showing the actual location of the museum, situated at the coordinates 00N 00E, the exact location on Earth where the equator crosses the prime meridian near the Gulf of Guinea, Africa.



TRIPTYCH OF AIR CONDITIONING.
Diorama depicting the ext-
ravagant use of air-conditio-
ning around the zero-degree
latitude.



PLASTIC PACIFIC HALL. Diorama portraying the plastic trash in the Pacific Ocean.



ROOM OF ICEBERGS. Diorama portraying the melting of the icebergs and their drift to the coastal regions within the earth's zero-degree latitude.



Neyran Turan is an Assistant Professor at the University of California-Berkeley and a partner at NEMESTUDIO, an architectural office that has been recognized with several awards, including the 2016 Architectural League New York Prize for Young Architects, 2016 Architects' Newspaper Best of Design Award, Notable Award at Core 77 Design Awards 2017, and a Graham Foundation Award. NEMESTUDIO's work, ranging from installations to buildings and landscapes, has been exhibited internationally at Storefront Art and Architecture Gallery, Parsons New School of Design Gallery in New York, Wurster Gallery in Berkeley, Chicago Architecture Biennial, SALT in Istanbul, Piazzale Donatello in Florence, Michigan University Taubman College Main Gallery and most recently, at the 3rd Istanbul Design Biennial curated by Beatriz at Colomina and Mark Wigley. Turan's work draws on the relationship between geography and design to highlight their interaction for new aesthetic and political trajectories within architecture and urbanism. Turan is the founding chief-editor of the Harvard University Graduate School of Design journal *New Geographies* and was the editor-in-chief of the first two volumes of the journal *New Geographies* 0 (2008) and *New Geographies: After Zero* (2009). Some of her recent writings have been published in journals and edited books including, *Perspecta* (MIT Press), *Are We Human?* (Lars Muller Publishers), *Climates: Architecture and the Planetary Imaginary* (Columbia University GSAAP & Lars Muller Publishers), *20/20: Editorial Takes on Architectural Discourse* (AA Publications), *Offramp*, *ARPA Journal*, *SAN ROCCO*, *Scenario Journal*, *Conditions*, *MONU*, *ThinkSpace*, *ARQA*, *Bidoun*, *Thresholds*, *The Superlative City*, *Landscapes of Development*, and *Mega-Cities*.