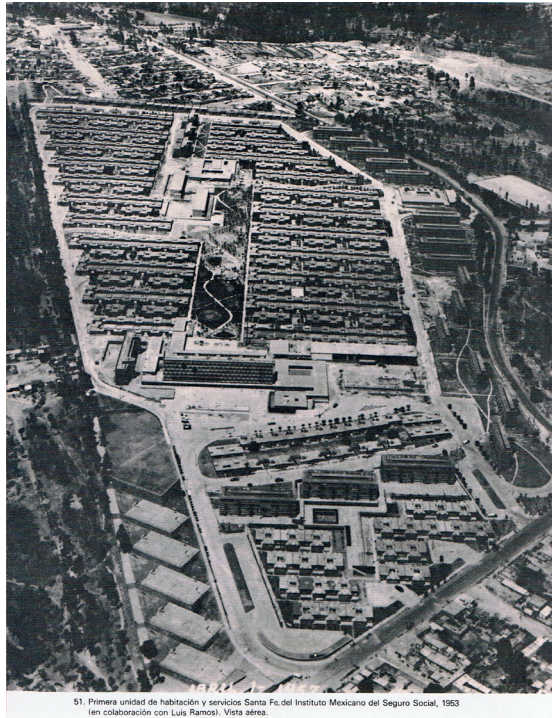


USF\DF Appropriation techniques

Onnis Luque



51. Primera unidad de habitación y servicios Santa Fé del Instituto Mexicano del Seguro Social, 1953 (en colaboración con Luis Ramos). Vista aérea.

This Photo essay draws light on everyday tactics of appropriation elaborated by the inhabitants while living in – and living with – one of Mexico City's most outstanding modernist heritage sites: the 1957 Unidad Habitacional Santa Fé by Architect Mario Pani.

Photographer Onnis Luque playfully presents the creative tensions between architecture and improvisation, space and time, project and everyday life. He provides us with deep insight into the multiple functions, forms and facets of the lively transformation process this social housing estate is undertaking day by day.







